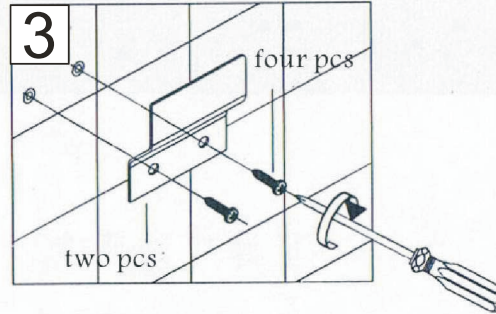
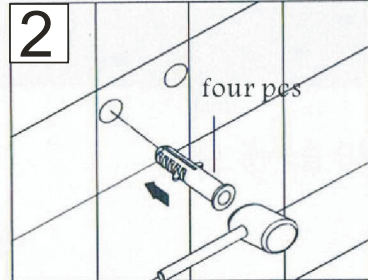
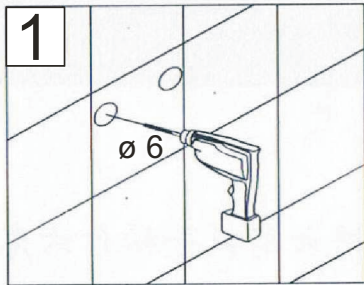


IDROSANITARIA

www.isaidrosanitaria.com

- I ISTRUZIONI DI MONTAGGIO
- GB FIXING INSTRUCTIONS
- D MONTAGEHINWEISE
- E INSTRUCCIONES DE MONTAJE
- F INSTRUCTIONS D'INSTALLATION

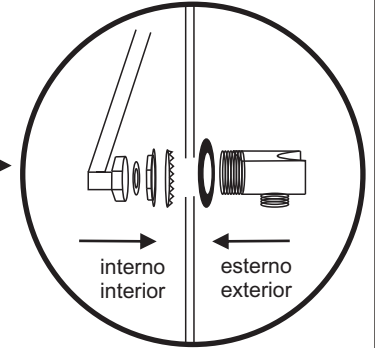
	I.S.A. IDROSANITARIA Via Seradello, 157 - Ponte Zanano - 25068 Sarezzo (BS) ITALY Tel. +39 030832881-8910961 (r.a.) Fax +39 030832883 E-mail: info@isaidrosanitaria.it Web: www.isaidrosanitaria.com		
	DATA	REVISIONE	APP.ENTE
10-16	0	U.T.-05	11-1GR



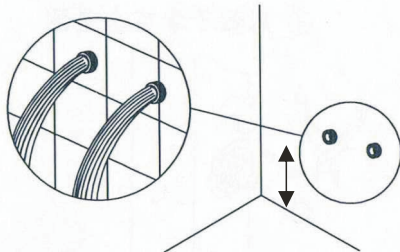
4



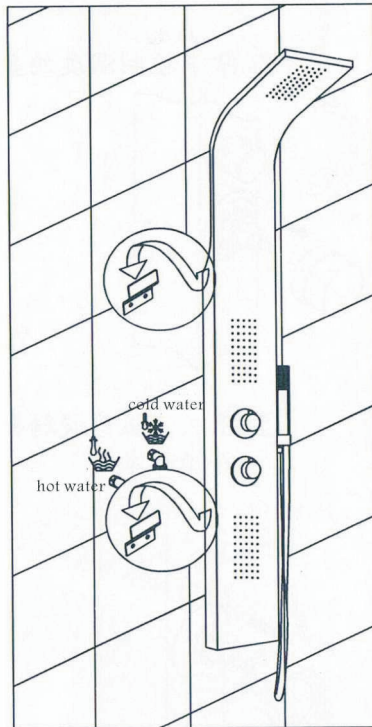
Importante rispettare la sequenza
Important respect the sequence



5



Per attacco acqua calda/fredda
Cm.115 (+/- 30 cm.)
dal pavimento
Water connections
hot / cold
cm. 115 (+/- 30 cm.)
from the floor



GARANZIA PRODOTTO

I.S.A. IDROSANITARIA garantisce i propri prodotti secondo le vigenti direttive CE.

Vi raccomandiamo per un buon mantenimento dei nostri prodotti, di seguire queste avvertenze:
pulire esclusivamente con detergente neutro e asciugare ogni volta con panno morbido.

Evitare assolutamente:
panni ruvidi, materiale abrasivo, sostanze acide, solventi o sostanze per pulire wc e rivestimenti.

Le alterazioni del prodotto causate dall'inosservanza di queste istruzioni non saranno riconosciute dal produttore.

PRODUCT GUARANTEE

I.S.A. IDROSANITARIA guarantees its products according to current CE directives.

For the best maintenance of our products, we recommend you to observe following instructions:
clean only with neutral detergent and dry each time with a soft cloth.

Absolutely avoid:
rough cloths, abrasive materials, acid substances or WC/tile cleaning products.

Manufacturer is not responsible for any alteration or change in the product caused by the non-observance of the above instructions.